

UNIVERSITAS SRIWIJAYA

Sustainability Report 2022



Green- Agro - Eco-Edu-Tourism-Campus



Ilmu Alat Pengabdian

FOREWORD

Universitas Sriwijaya is the oldest university in the Southern Sumatra. It was officially launched by the first President of the Republic of Indonesia, Dr. Ir. H. Soekarno on November 3, 1960.



We, *Universitas Sriwijaya*, very well understand that COVID-19 pandemic is still ongoing. However, in line with Indonesian policy on implementing the Sustainable Development Goals (SDGs), we do not overlook the importance of supporting such a policy. We also believe that campus plays very important roles in strengthening and ensuring that the recovery to reduce carbon emissions, conserve natural resources, advance gender equality and tackle growing poverty and inequalities is sustained. Therefore, untangling complexity of the SDGs urges all stakeholder to collaborate hand-in-hand in order to ensure that our efforts can directly contribute significantly to the community.

We are eager to say that the **Triple Resiliences** under which *Universitas Sriwijaya* endeavor to be a **Green-Agro-Eco-Edu-Tourism-Campus** will be a part of the SDGs and will contribute to build back better future.

I would like to thank all members of *Universitas Sriwijaya* who have worked together to advance this institution as a **Green-Agro-Eco-Edu-Tourism-Campus**.

Palembang, December 29, 2022



Prof. Dr. H. Anis Saggaff, MSCE, IPU., ASEAN. Eng.

CONTENTS

	PAGE
FOREWORD	ii
CONTENTS	iii
SGDs INDEX	v
ABOUT <i>UNIVERSITAS SRIWIJAYA</i>	1
Similar Access to Education	2
Caring for Communities	3
Response to Covid-19	4
Green- Agro-Eco-Edu-Tourism-Campus	7
Equality	13
Energy and Climate Action	17
Collective Action	19



SDGs INDEX

	2		15
	3		7
	4, 7		7
	7		13
	15		7
	7		7
	17		19
	19		19
	9		

ABOUT UNIVERSITAS SRIWIJAYA

Universitas Sriwijaya has 2 campuses.



1. Indralaya:

- a. $03^{\circ}12'36''$ S to $03^{\circ}14'29''$ S and $104^{\circ}38'8''$ E to $104^{\circ}39'54''$ E,
- b. Constructed from 1989 to 1993,
- c. Fully operated on February 1, 1995,
- d. Officially announced by President Soeharto on March 6, 1997, and
- e. Total area of 724 Ha.



2. Palembang:

- a. $02^{\circ}59'15''$ S to $02^{\circ}59'00''$ S and $104^{\circ}43'52''$ E to $104^{\circ}44'01''$ E
- b. Officially announced by The First President of Indonesia, Mr. Soekarno, in November 3, 1960,
- c. Only two faculties, Economic and Law, and
- d. Total area of 32.76 Ha.

Number of Faculty:

11

1. Economics,
2. Law
3. Engineering
4. Medicine
5. Agriculture
6. Teaching
7. Social and politics
8. Mathematics and Sciences
9. Computer
10. Public Health
11. Graduate Program

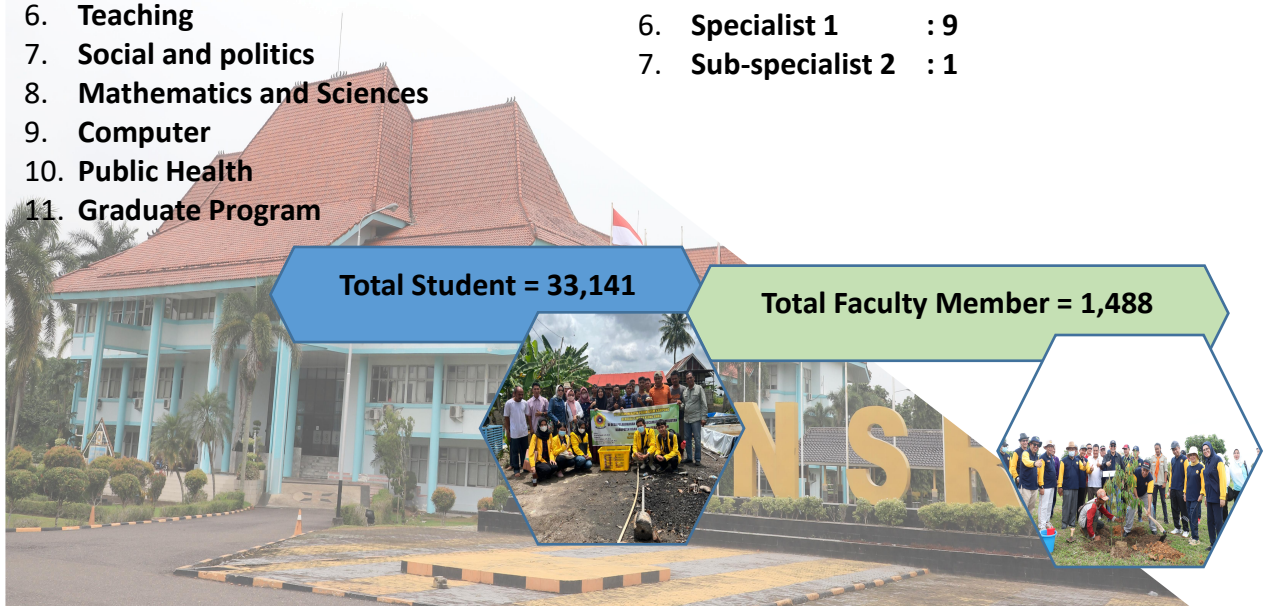
Number of Study Program:

11

- | | |
|---------------------|------|
| 1. College/D3 | : 5 |
| 2. Under-graduate | : 57 |
| 3. Master | : 27 |
| 4. Doctoral | : 10 |
| 5. Profession | : 5 |
| 6. Specialist 1 | : 9 |
| 7. Sub-specialist 2 | : 1 |

Total Student = 33,141

Total Faculty Member = 1,488





Similar Access to Education

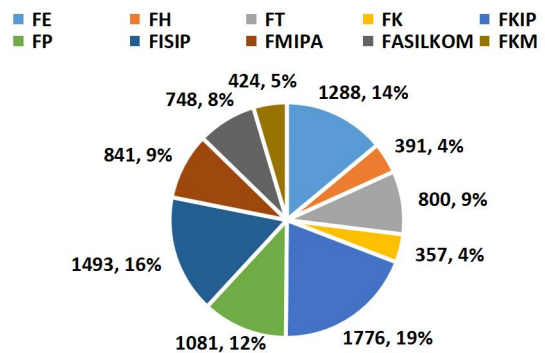
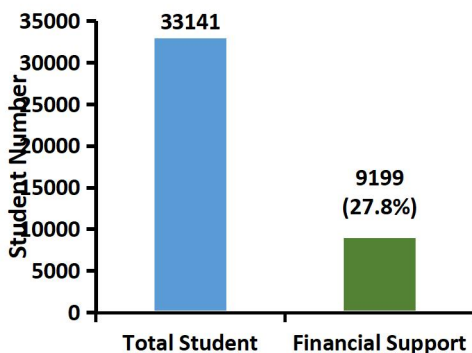
It has been widely acknowledged that education is a basic right of all human beings regardless of region of origin, religion, and ethnicity. Therefore, *Universitas Sriwijaya* welcome all prospective students from all over Indonesia, including those having excellent academic achievement but are economically constrained.



The strike of Covid-19 has reversed much of the progress made in reducing global hunger. *Universitas Sriwijaya* is understanding that building local action is part of the public response and can help building resilience of society around campus.

Universitas Sriwijaya through the Student and Alumni Affairs raised donation and distributed food aid to all staffs, students and community in need in and around campus during from 2019 to 2022.

In addition, *Universitas Sriwijaya* also provide aid to communities affected by disasters, such as fires, and floods. For example, *Universitas Sriwijaya* provided aids on food, clothes, and medicines to people affected by severe fires in Tulung Selapan Ilir Village, Tulung Selapan District, Ogan Komering Ilir Sub-district in April 2022.





Caring for Communities



The strike of Covid-19 has reversed much of the progress made in reducing global hunger. *Universitas Sriwijaya* is understanding that building local action is part of the public response and can help building resilience of society around campus.

Universitas Sriwijaya through the Student and Alumni Affairs raised donation and distributed food aid to all staffs, students and community in need in and around campus during from 2019 to 2022.

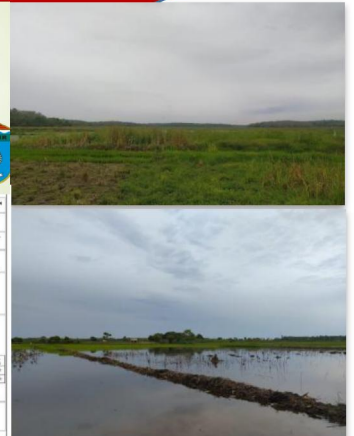
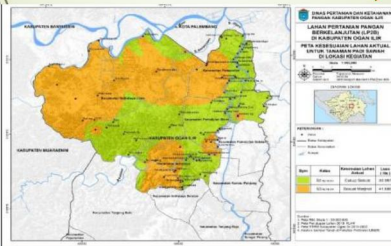
In addition, *Universitas Sriwijaya* also provide aid to communities affected by disasters, such as fires, and floods. For example, *Universitas Sriwijaya* provided aid on food, clothes, and medicines to people affected by severe fires in Tulung Selapan Ilir Village, Tulung Selapan District, Ogan Komering Ilir Sub-district in April 2022.

Through a collaboration with the Office of Agriculture, Food Crops and Horticulture of South Sumatra Province, *Universitas Sriwijaya* conducted a Survey, Investigation and Design (SID) of Optimizing Riparian Swamp to Increase Agricultural Production in Banyuasin (34,500 ha), OKI (10,000 ha), and OI, Muara Enim and OKU Timur (5,490 ha) Districts of South Sumatra Province.

LAHAN PERTANIAN PANGAN BERKELANJUTAN (LP2B) DI KABUPATEN OGAN ILIR

KERJASAMA FAKULTAS PERTANIAN UNSRI DAN KABUPATEN OGAN ILIR

INDERALAYA
08 JANUARI 2021



The in-campus clinic and Nursing Study Program of *Universitas Sriwijaya* held social services for the community.



Response to Covid-19



1. Covid-19 Task Force

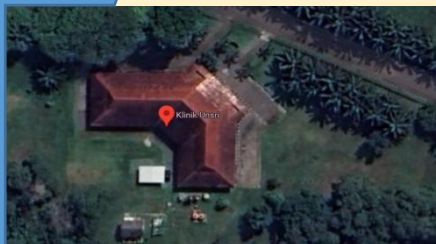
During the outbreak of the Covid-19 Pandemic, *Universitas Sriwijaya* does not necessarily stop academic activities. To ensure the continuity of the academic process during Covid-19, *Universitas Sriwijaya* established a Covid-19 “Task Force” which is under the coordination of the Vice Rector for Student and Alumni Affairs.



2. Outreach Health Program

In spite of Covid-19 outbreak, *Universitas Sriwijaya* continues all academic activities. To ensure the safety and health of the environment and infrastructure, the task force mentioned above have been taking the following steps:

1. Regularly disinfect all infrastructures,
2. Provide education about Covid-19,
3. Provide prevention tools in all units within *Universitas Sriwijaya* campus,
4. Provide space and time for consultations (help desk),
5. Help people infected with Covid-19 (ambulance, vitamins, and medicines), and
6. Organize mass vaccines by collaborating with multi-stakeholders, such as Indonesian National Police (*POLRI*), *Bank Rakyat Indonesia*, Sinar Mas Group,



As an educational institution *Universitas Sriwijaya* is always trying to increase its' engagement to the health and welfare of the society. Therefore, the in-campus clinic provides services not only for students, academics, administrative staffs, but also for the communities in need.



In line with the policy of the Directorate General of Higher Education, Research and Technology, Ministry of Education, Culture, Research and Technology in stunting mitigation, *Universitas Sriwijaya* has also taken several factual steps.

Through multi-stakeholder collaboration (several universities in South Sumatra and *BKKBN*), Research Team of *Universitas Sriwijaya* have been conducting action research on the Stunting Prevention in South Sumatra. This activity is supported by the *Kedaireka* funding scheme. This collaboration assists all villages in South Sumatra to reduce the stunting prevalence rate by 14% by the end of 2024.



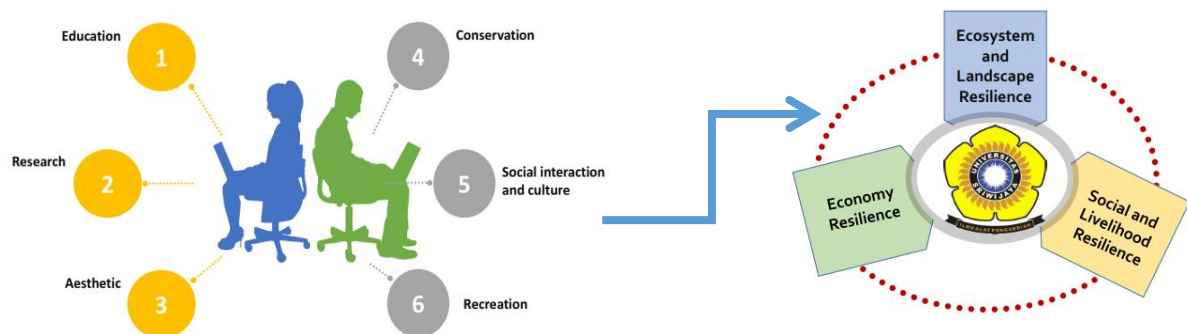
In addition, *Universitas Sriwijaya* has strengthened the engagement in the stunting mitigation efforts through a Thematic Community Service by students (*KKN Tematik*). In 2022, this activity has been escorted by 400 students from various faculties and study programs and was carried out in 32 villages in four districts namely Ogan Ilir, Ogan Komering Ilir, Muara Enim, and Pali Districts.



Green- Agro - Eco- Edu-Tourism-Campus



We all depend on clean air and water, plants, and natural resources. Thus, it has been widely acknowledged that human health and well-being are directly tied to the state of the environment. Realizing that learning in a healthy environment helps students, academics, and administrative staffs acquiring a deeper understanding and sound knowledge of the subject matter, the development of *Universitas Sriwijaya* campus is based on the Triple-Bottom Campus Development Approach in order to create Triple Resiliences. Therefore, *Universitas Sriwijaya* has multiple function, not only as educational values but also recreational values.

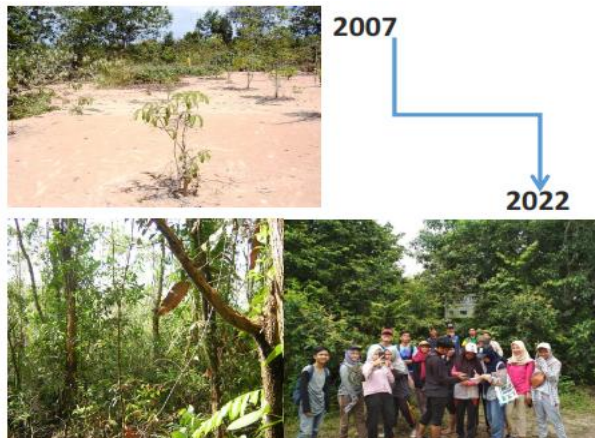


1. Sustainable Practices for Campus Setting



The total campus area of *Universitas Sriwijaya* is about 7,241,059 m². As a part of the commitment to be a Green-Argo-Eco-Edu-Tourism Campus, *Universitas Sriwijaya* is not only maintaining the existing natural forest area of 2,2285,020 m² (32% of total area) but also planting trees and fruit trees in an area of 1,405,31 m² (19% of total area).

1. Arboretum



The natural forest area covers an arboretum area of about 5 ha. The establishment of the arboretum was initiated in 2007 with modest funding from South Sumatra Forest Fire Management Project (SSFFMP), a technical co-operation project jointly funded by the European Commission and the Government of the Republic of Indonesia through the Ministry of Forestry (MoF).

During the establishment, the invasive *Acacia mangium* wild. were removed physically by pulling out the seedlings or cutting off the top growth immediately at the soil surface. If the tree was too large for physical removal, ring-barking method or girdling was employed. It was carried out by removing a ring of bark of about 25 to 30cm wide. On the other hand, native tree species were left undisturbed. Amongst important native tree species include *Alstonia scholaris*, *Peronema canescens*, *Schima wallichii*, *Fagraea fragrans*, *Melaleuca leucadendra*, and *Parkia speciose*.

2. Garden of Eden

Included in the planted area is "Garden of Eden". The establishment of this garden has been intended to realize the "Triple Resilience"-campus as described above. Therefore, *Universitas Sriwijaya* has allocated land and developed a 120 hectare of a "Garden of Eden" within the campus in Indralaya, Ogan Ilir District. This garden has multi functions, such as recreation, research, and field laboratory.

The construction of this park is carried out through a multi-party cooperation scheme. The Ministry of Public Works and Public Housing has built 5 reservoirs. Tree seedlings, especially fruit trees, are provided by local governments, private companies and other donors.



3. Sustainable Water Supply



Universitas Sriwijaya has its own SPAM as clean water facility with capacity of 25 L/sec. Increasing clean water demand due to the increasing number of students, academics, and administrative staffs, the second SPAM with capacity of 20 L/sec will be constructed and operated in 2023.

Beside ensuring the quantity, it is also important to ensure the sustainability and the safety of water supply. Therefore, the following measures have been taken:

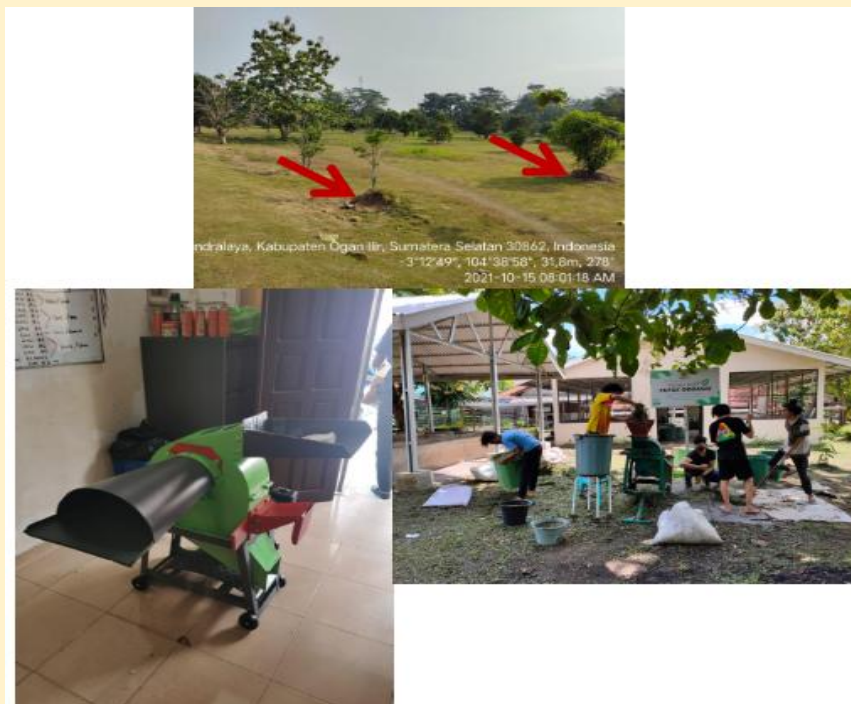
1. Maintain water absorption area. Around 60% (4,361,607 m²) of total area in campus have been maintained as water absorption area,
2. Construct 5 reservoirs with total area of 108.60 Ha. The details are;
 - a) Reservoir 1 (Reservoir 1) : 42.09 ha with a water depth of 9 m,
 - b) Reservoir 2 (Reservoir 2) : 8.37 ha with a water depth of 2 m,
 - c) Reservoir 3 (Reservoir 3) : 31.38 ha with a water depth of 3 m,
 - d) Reservoir 4 (Reservoir 4) : 26.25 Hectares ha with a water depth of 3 m,
 - e) Reservoir 5 (Reservoir 5) : 0.51 Hectares ha with a water depth of 3 m,
3. Conduct water quality analysis regularly.

4. World Water Day Webinar

Realizing that water resilience is one of the important components of the Triple Resiliences described above, *Universitas Sriwijaya* collaborating with *Balai Besar Wilayah Sungai Sumatera VIII* and City Office of Palembang regularly organizes either a national or an international seminar/webinar. The themes vary each year, depending on the theme of the World Water Day. The main purpose of such an event is to refresh and reflect on the importance of water as a source of life. This webinar invites speakers researchers, academia, and practitioners.



5. Recycling Organic Waste



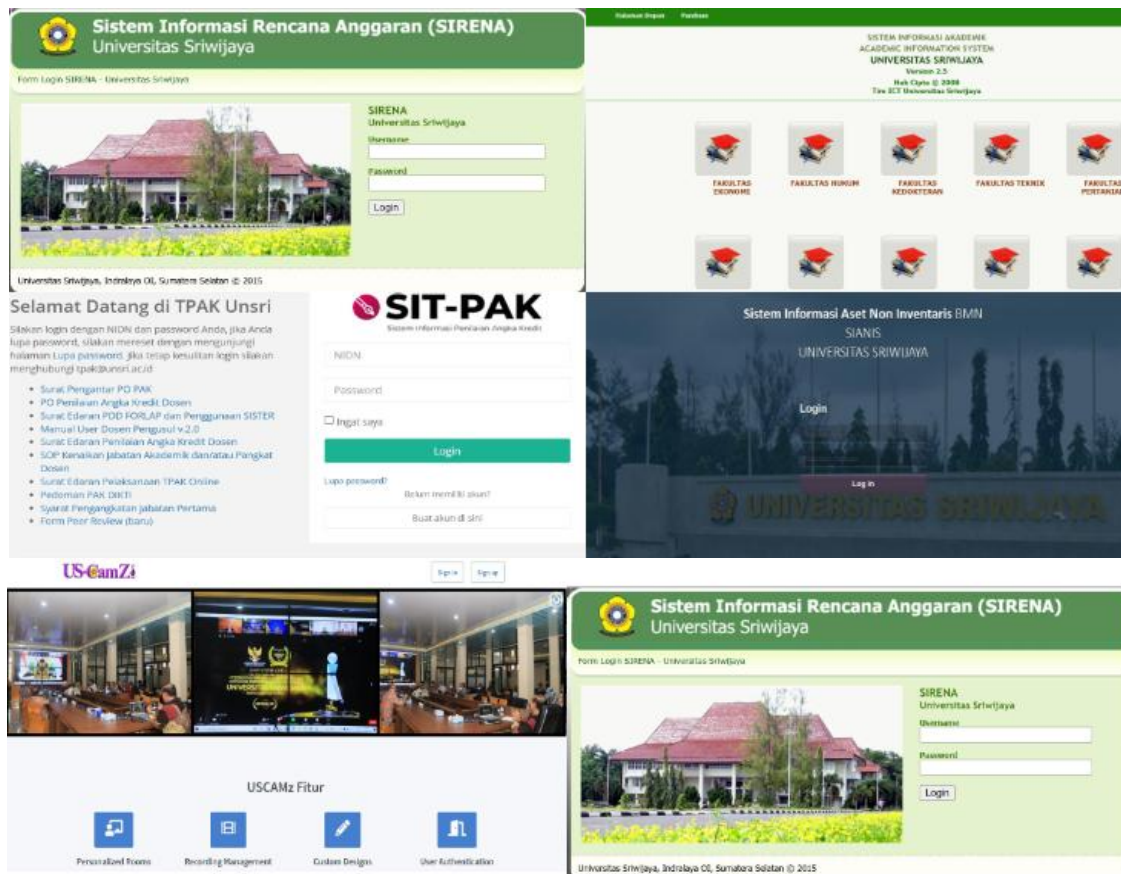
Main sources of organic waste in campus include grass cuttings, rice straw, corn straw. The organic waste are recycled in two different ways as follow:

1. **Direct application.** Grass cuttings are partly piled at the base of trees, and fruit trees at the field, and
2. **Composting:** The remaining of grass cuttings, rice straws, corn straws, and tree pruning are chopped into small pieces using a thresher. The mixtures are then composted by mixing them with local bacterial inoculants and/or earthworm. Those are composted using earthworm are called vermi-composting.

The activity above, mainly composting, involve students of Soil Science Department, Faculty of Agriculture as part of their final thesis.

6. Reducing Paper and Plastic Use in Campus

The *Universitas Sriwijaya* campus provides its' academic community with an abundance of natural resources. Maintaining the settings requires all members of campus community to use and produce in sustainable ways to avoid reversal harm to the environment. Therefore, *Universitas Sriwijaya* take policies and steps to reduce the use of paper and plastic in daily workplaces by developing IT-based management.



7. Life on Land

The community of *Universitas Sriwijaya* realizes that campus life is part of the ecosystem. Hence, flourishing Life on Land in campus is the foundation for a productive and enjoyable learning process. Maintaining the existing natural vegetation and replanting sparsely vegetated areas are two measure to maintain or even improve life on land in *Universitas Sriwijaya* campus. The main purposes are:

1. To maintain and enhance plant biodiversity,
2. To provide habitat for wildlife,
3. To increase green space,
4. To increase CO₂ sequestration,
5. To reduce run-off while increasing water infiltration, and
6. To improve soil and water quality.



In addition, researchers of *Universitas Sriwijaya* are actively assisting parties outside the campus in studies related to biodiversity. For example, *Universitas Sriwijaya* recently carried out a collaboration with PT Tanjung Enim Lestari Pulp and Paper in identification of flora and fauna as baseline data in biodiversity protection area.

**PETA SAMPLING VEGETASI
KAWASAN PERLINDUNGAN
KEANEKARAGAMAN HAYATI
PT. TANJUNGENIM LESTARI**

KAB. MUIARA ENIM
PROVINSI SUMATERA SELATAN

Proyeksi : Transverse Mercator
Datum : WGS-1984
Sistem Grid : Geografi & UTM

Legenda:
 ● Titik Batas Kawasan Kahayati
 ● Ptit Pengamatan Vegetasi
 — Jalur Pengamatan

Sumber:
 1. Citra Drone Oktober 2022
 2. Peta Administrasi Kab. Muara Enim
 3. Citra Imagery, Esri.

Film Keanekaragaman
Universitas Sriwijaya

8. Non-Smoking Policy in Workplace

Beside maintaining the infrastructure setting, *Universitas Sriwijaya* also ban smoking/vaping on all workplaces. Smoking/vaping is allowed only outdoors.



2. Reducing Inequality

In accordance with the Permendikbud, Research and Technology No. 30/2021, *Universitas Sriwijaya* has established a Task Force to prevent sexual harassment in campus. In addition facility and accessibility for disability are also provided.





Energy and Climate Action

2. Solar Cell

Renewable energy resource such as solar cell has been installed both in Palembang and in Indralaya campuses. The details are:

1. Solar cell lamps of 600 watts in Palembang Campus
 - a) Faculty of Economics = 27 units,
 - b) Faculty of Engineering = 27 units, and
 - c) Along the access roads at Palembang campus = 27 units
 - d) Rectorate = 47 units at Indralaya campus.
 2. Solar cell lamps of 600 watts in Indralaya Campus = 47 units
- Total energy generated by the solar cell is 76.800 watts (76.8 KW).



3. Green Building

1. The Rectorate Building implements a passive system to supply both outdoor air and lighting. This is possible because the building has a wide open compartment in the middle. This gives two benefits, namely:
 - a) Natural air circulation (natural ventilation), and
 - b) Natural lighting.
2. The condition above enables the building to have a healthy and cost effective way to save energy and provide fresh air for the building occupants, and
3. The Student Dormitory has a V-shape, which enables the building to catch wind and then distributes it to each room to help cooling down the room.

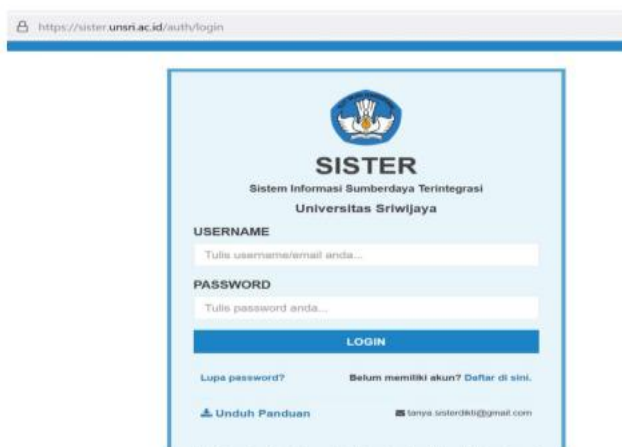




Collective Action

1. Equal Opportunity

1. The employees of *Universitas Sriwijaya* consist of:
 - a) Civil servants, and
 - b) Non-civil servants.
 The later further consists of:
 - c) BLU employees, and
 - d) Contract.
3. Policies on talent management and payroll are following applicable regulations, and
4. All employees have equal rights, regardless of their race, ethnic, religion, gender, or marital status, age, and disability.



In addition, Universitas Sriwijaya also establish a Carrier Development Centre for students. This functions of this unit are:

1. Facilitates character and career development to students and alumni,
2. Mediates job seekers and companies/agencies/industries, and
3. Organizes seminars, training), job fairs, career & scholarship expo, and tracer study.

CDC UNSRI Softskill Training:

The Digitalization of Agricultural Industry

RABU, 31 AGT 2022
13:00 - s/d selesai

Live via: **zoom**

Link akan dikirimkan ke email setelah registrasi.

OPENING SPEECH
Iwan Stia Budi, S.KM. M.Kes.
Wakil Rektor Bidang Kemahasiswaan dan Alumni Unswi

KEYNOTE SPEAKER
Reyhan Dhani Gara, S.P
Group Sales Lead

Filliadi Katiandagho
Software Engineering Manager

REGISTRATION LINK
QR Code

This webinar will provide:
Certificate and Special Merchandise from CDC UNSRI

www.cdc.unswi.ac.id | @cdc.unswi | @cdsunswi | cdc@unswi.ac.id

2. Transparency and Openness of Public Information

Information disclosure is now very essential. Therefore the government has issued Law No. 14 of 2008 concerning Information Disclosure. Hence *Universitas Sriwijaya* issued two Rector Decrees, namely:

1. Number: 0615/UN9/KP/2017 concerning the Appointment of Information Management and Documentation Officers, and
2. Number 08 of 2017 on the Organizational Structure of Information Management and Documentation.



3. Collaboration for SDGs



Universitas Sriwijaya is fully aware that collective and collaborative actions are required to achieve the SDGs Goals. Therefore, *Universitas Sriwijaya* is always striving to collaborate with multi stakeholders. Amongst efforts are as follows:

1. The Foreign Policy Community of Indonesia (FPCI) in collaboration with the British Embassy in Indonesia held the Indonesia Universities Climate Conference (IUCC). This activity was the first event that brought together representatives from dozens of universities in Indonesia to discuss the results of COP-26 (UN Climate Change Conference in Glasgow) and the Glasgow Climate Pact, a document of countries' agreement to prevent global temperature rises exceeding 1.5 degrees and minimize the impact of the climate crisis. IUCC aims to mobilize the academic sector (including universities and research institutions) to discuss Indonesia's climate adaptation, mitigation and financing solutions,
2. Climate-smart agrosilvofishery approach of peatland restoration in South Sumatra (Session 1: Restoration of degraded peatland science, policy, and practice), and
3. To realize a knowledge management system and a real form of support, World Agroforestry (ICRAF) and members of the South Sumatra WikiGambut has attempted to collect information and research results. Therefore, a routine activity called "Peat Talk" has been initiated.



Universitas Sriwijaya

ILMU ALAT PENGABDIAN

Jl. Raya Palembang - Prabumulih Km. 32 Indralaya, OI,
South Sumatra 30662

Phone: 0711-58069

Faximile: 0711-580664

Email: humas@unsri.ac.id