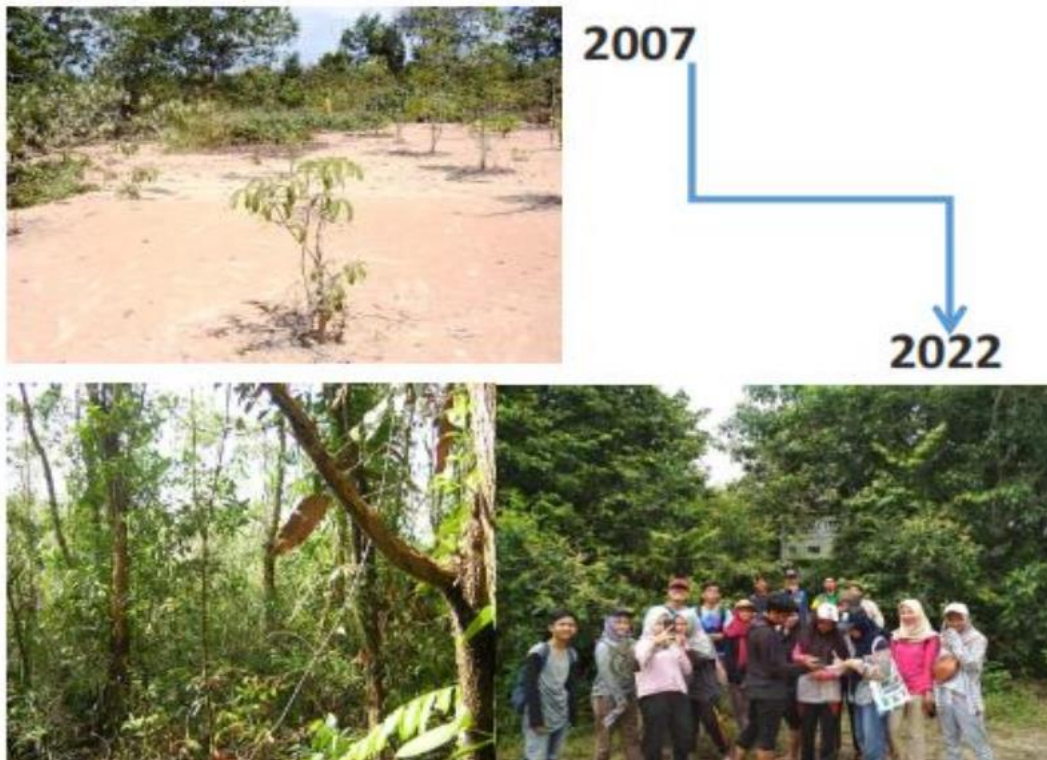


11.2.4 Public Green space



The total campus area of *Universitas Sriwijaya* is about 7,241,059 m². As a part of the commitment to be a Green-Argo-Eco-Edu-Tourism Campus, *Universitas Sriwijaya* is not only maintaining the existing natural forest area of 2,2285,020 m² (32% of total area) but also planting trees and fruit trees in an area of 1,405,31 m² (19% of total area).

1. Arboretum



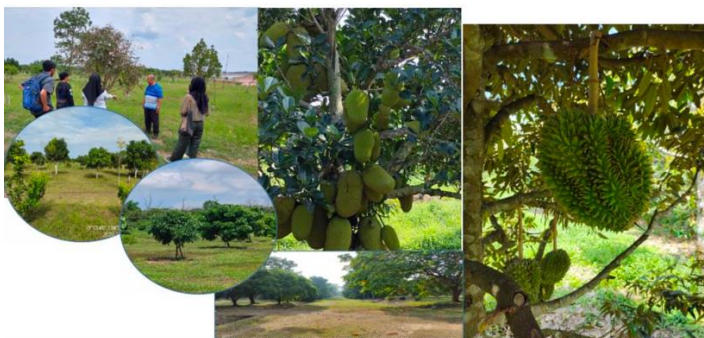
The natural forest area covers an arboretum area of about 5 ha. The establishment of the arboretum was initiated in 2007 with modest funding from South Sumatra Forest Fire Management Project (SSFFMP), a technical co-operation project jointly funded by the European Commission and the Government of the Republic of Indonesia through the Ministry of Forestry (MoF).

During the establishment, the invasive *Acacia mangium* wild. were removed physically by pulling out the seedlings or cutting off the top growth immediately at the soil surface. If the tree was too large for physical removal, ring-barking method or girdling was employed. It was carried out by removing a ring of bark of about 25 to 30cm wide. On the other hand, native tree species were left undisturbed. Amongst important native tree species include *Alstonia scholaris*, *Peronema canescens*, *Schima wallichii*, *Fagraea fragrans*, *Melaleuca leucadendra*, and *Parkia speciose*.

2. Garden of Eden

Included in the planted area is "Garden of Eden". The establishment of this garden has been intended to realize the "Triple Resilience"-campus as described above. Therefore, *Universitas Sriwijaya* has allocated land and developed a 120 hectare of a "Garden of Eden" within the campus in Indralaya, Ogan Ilir District. This garden has multi functions, such as recreation, research, and field laboratory.

The construction of this park is carried out through a multi-party cooperation scheme. The Ministry of Public Works and Public Housing has built 5 reservoirs. Tree seedlings, especially fruit trees, are provided by local governments, private companies and other donors.



Green Space Universitas Sriwijaya (Palembang)



